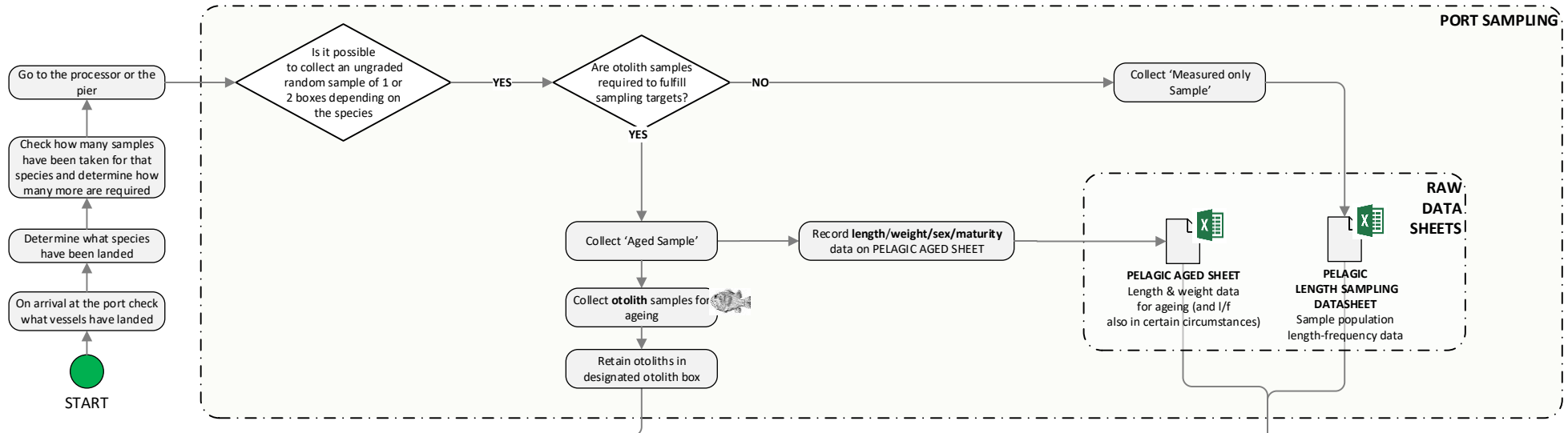
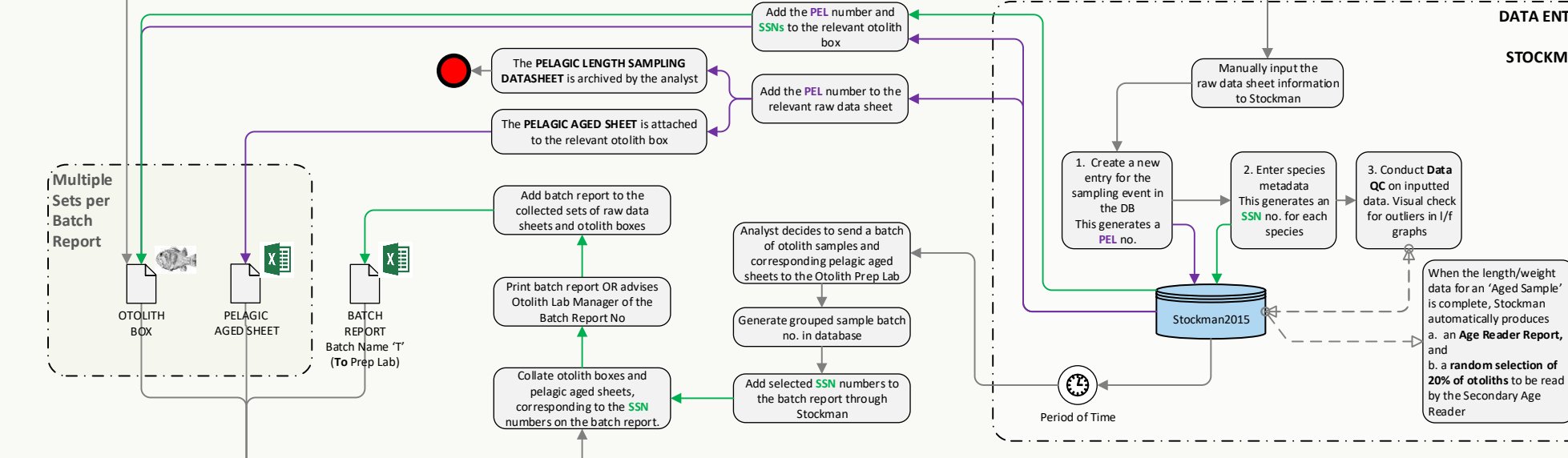


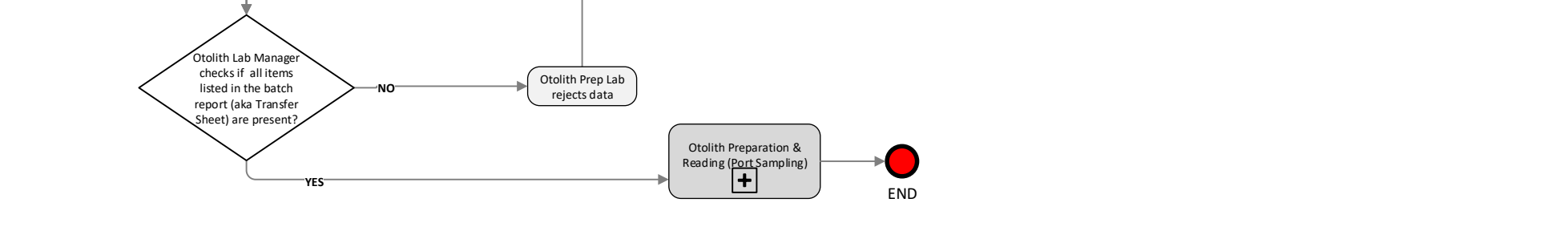
Data Collection in Ports



Data Storage in MI



Analysis in MI



PORT SAMPLING

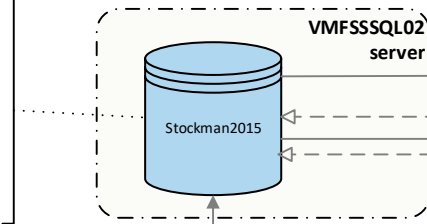
DATA ENTRY TO STOCKMAN

END

Data Storage in MI

When the analyst enters the length/weight data for an 'Aged Sample', Stockman automatically generates

1. an **Age Reader report**, ready to be printed by the Primary Age Reader at a future date
2. a **random selection** of 20% of otoliths to be read by the Secondary Age Reader. This is indicated on the Age Reader Report



Analysis in MI

