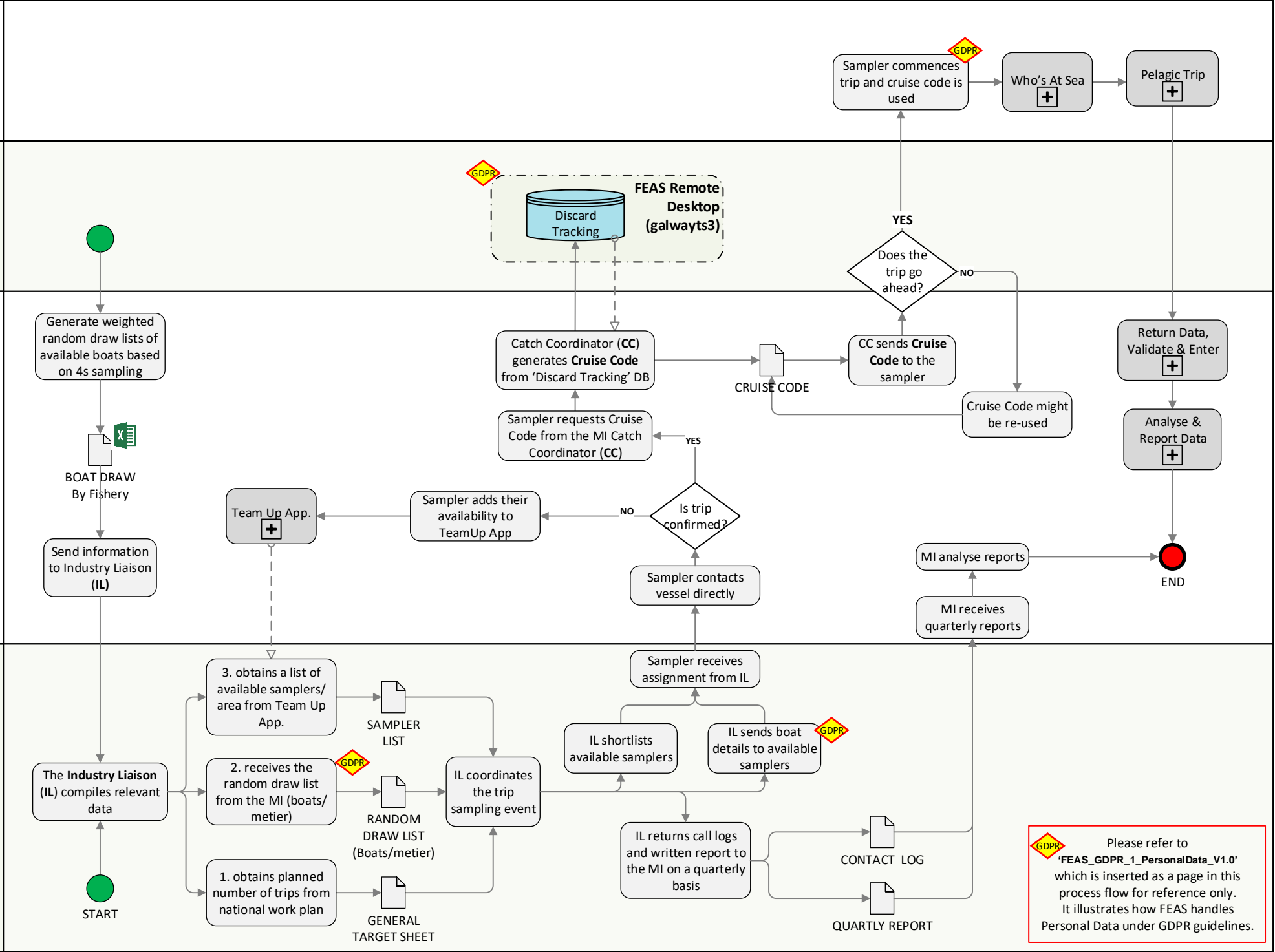


**Data Collection on Vessel**  
**Data Storage in MI**  
**MI Participation**  
**Industry Liaison based in MI**

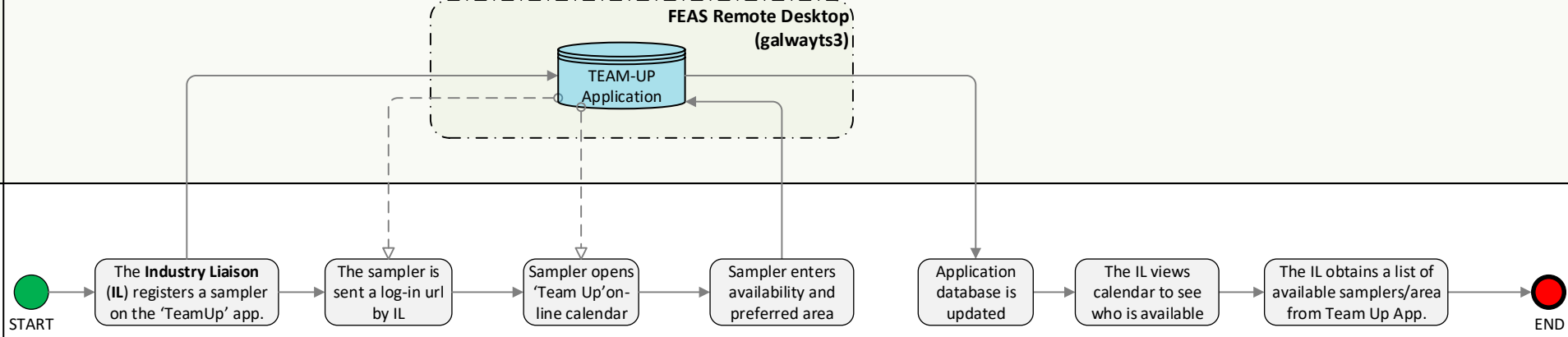


Data Collection

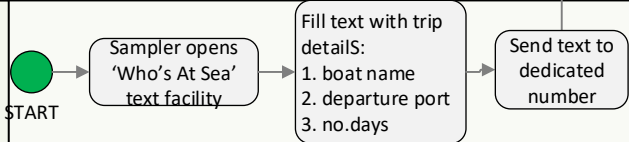
Data Storage in MI

Analysis in MI

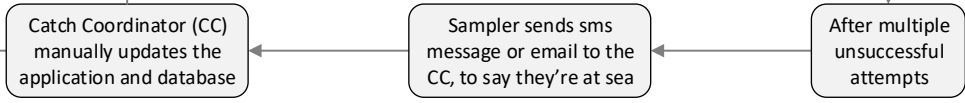
External



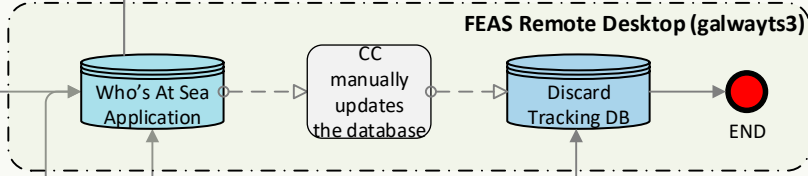
External



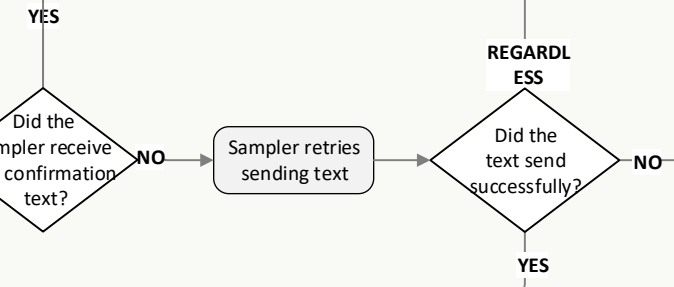
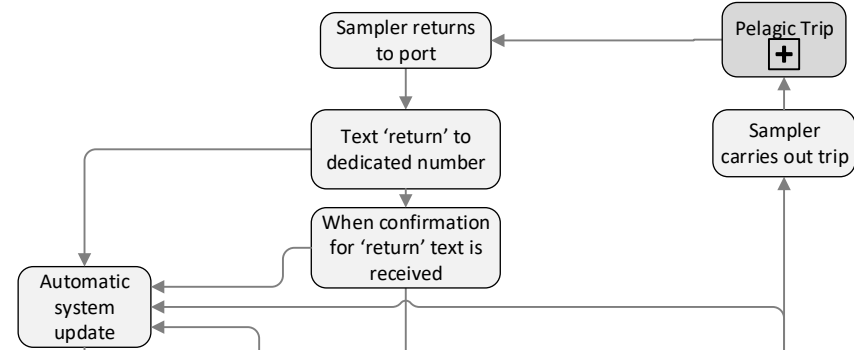
Analysis in MI



Data Storage in MI

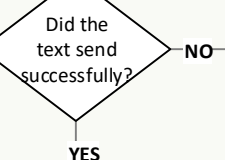


Data Collection on Vessel

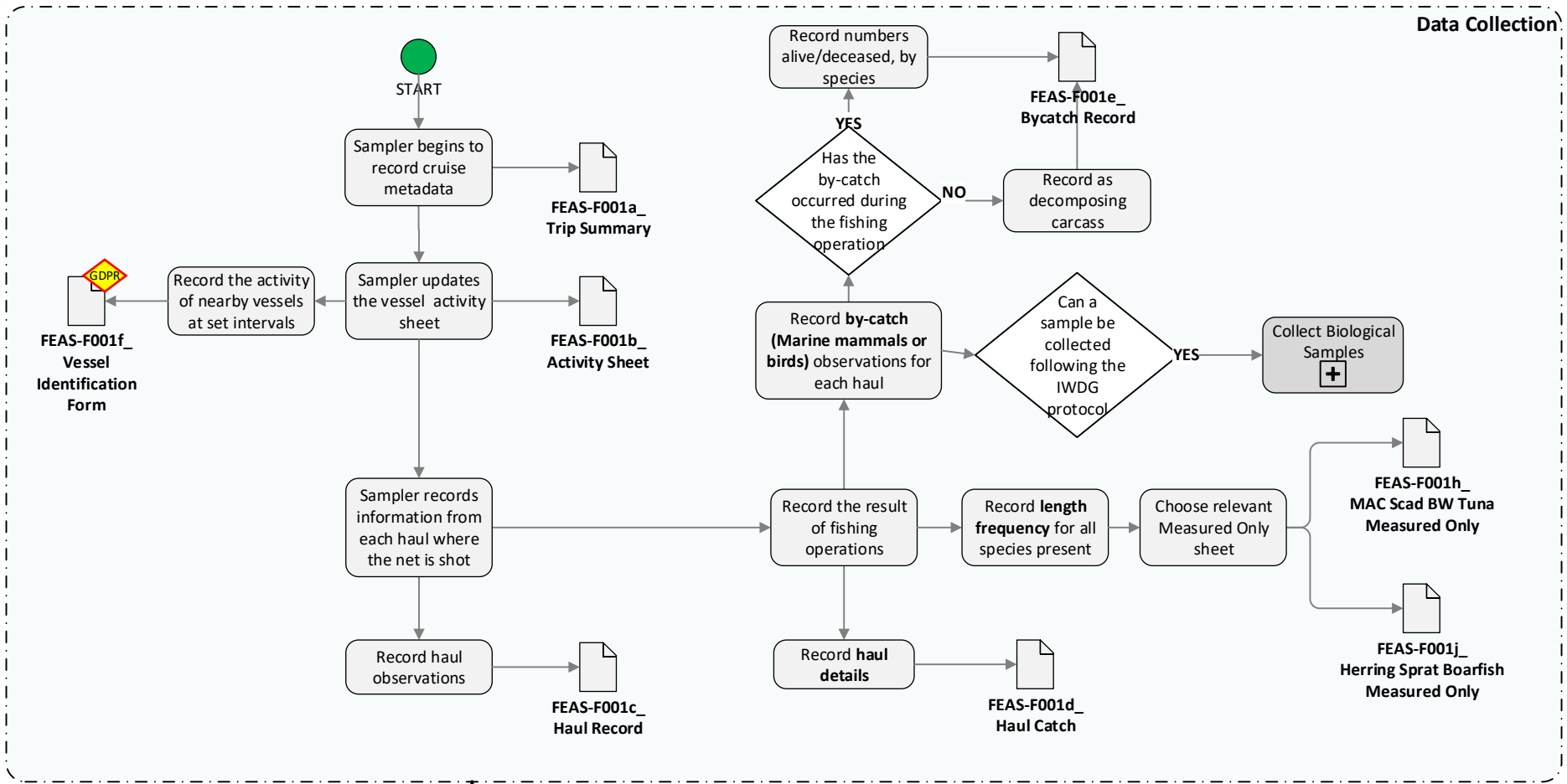


REGARDLESS

REGARDLESS



Data Collection on Vessel

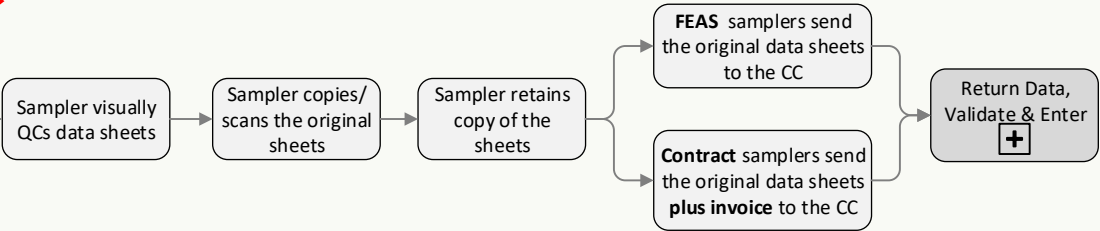


Complete trip data sheets

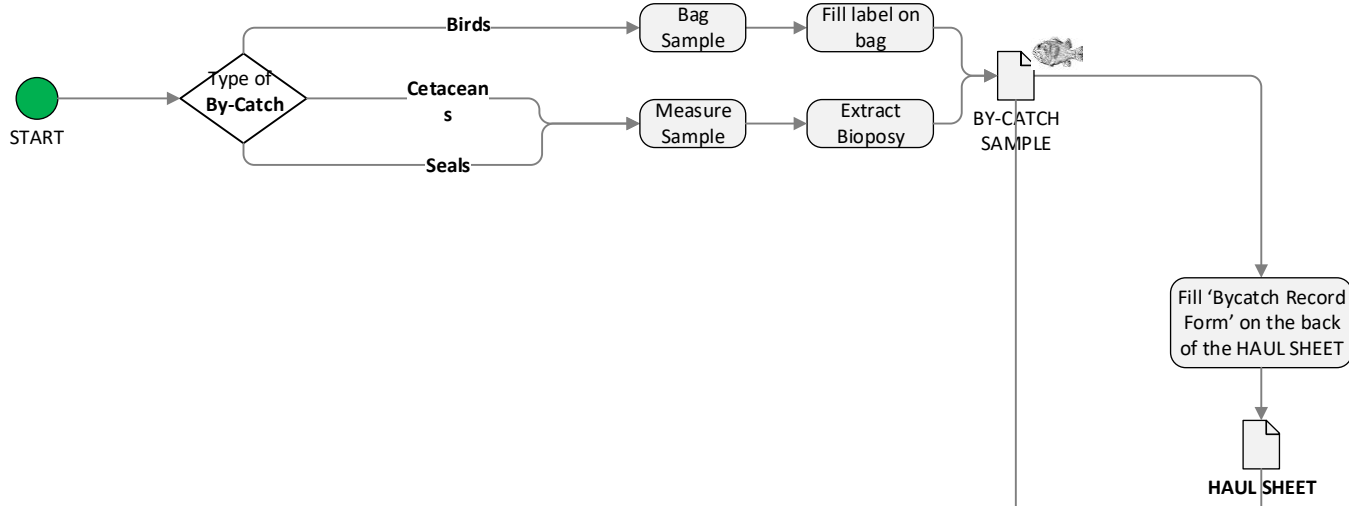
Data Collation at Port

**GDPR** Please refer to 'FEAS\_GDPR\_1\_PersonalData\_V1.0' which is inserted as a page in this process flow for reference only. It illustrates how FEAS handles Personal Data under GDPR guidelines.

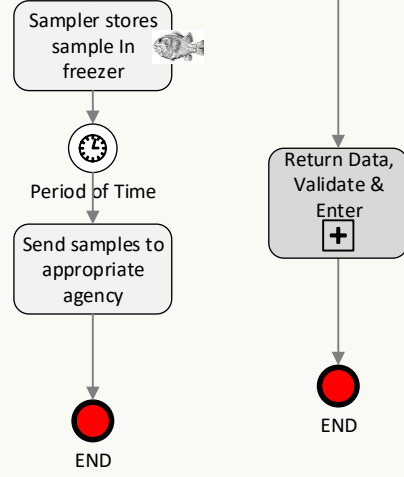
- Collate Raw Data Sheets** **GDPR**
- F001a\_Trip Summary
  - F001b\_Activity Sheet
  - F001c\_Haul Record
  - F001d\_Haul Catch
  - F001e\_Bycatch Record
  - F001f\_Vessel Identification Form
  - F001h\_MAC Scad BW Tuna Measured only
  - F001j\_Herring Sprat Boarfish Measured Only



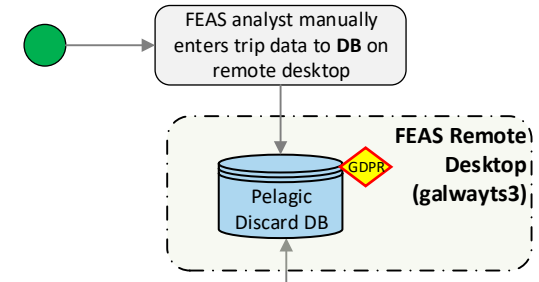
Data Collection On Vessel



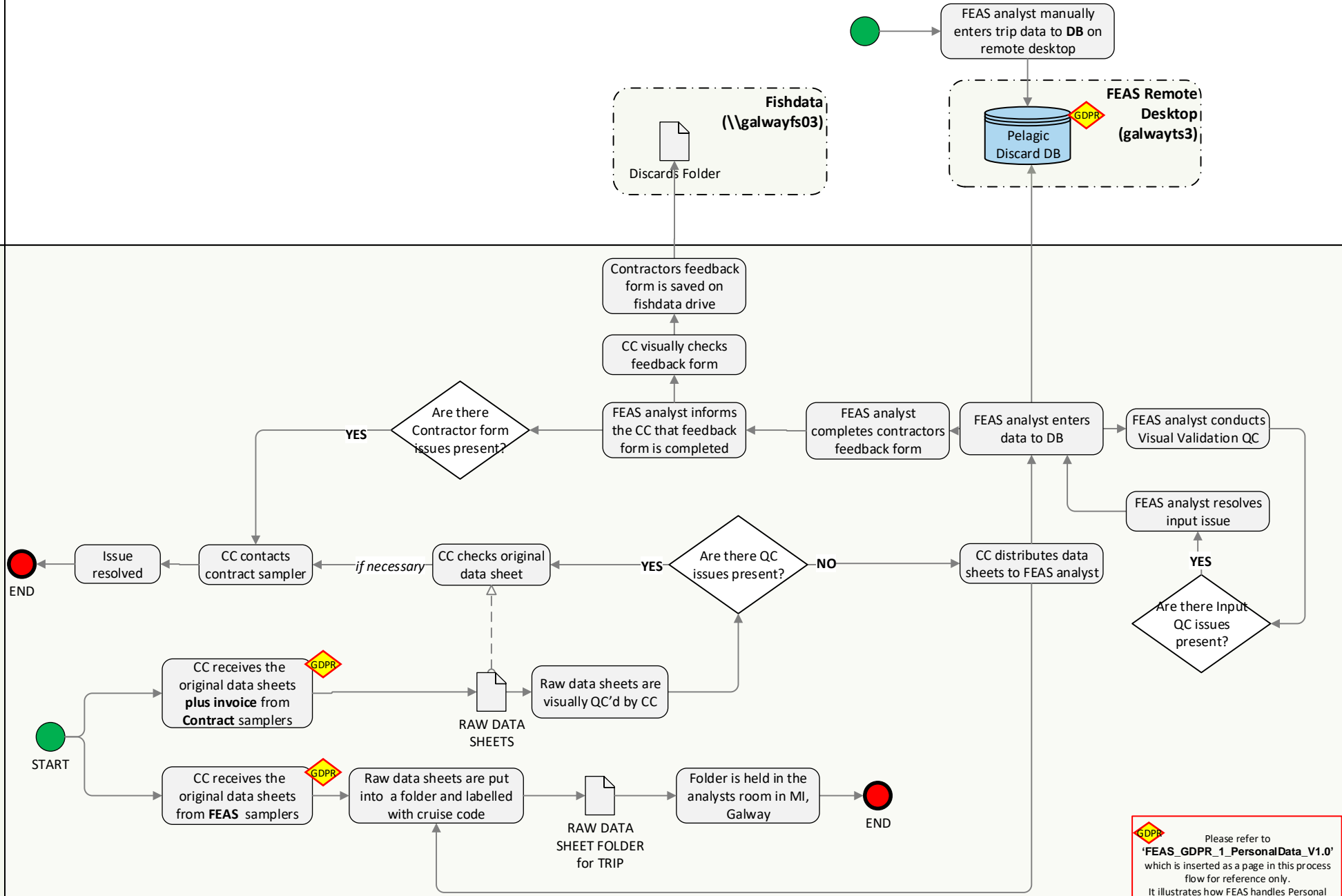
Data Collection in Ports



Data Storage in MI



Data Entry in MI

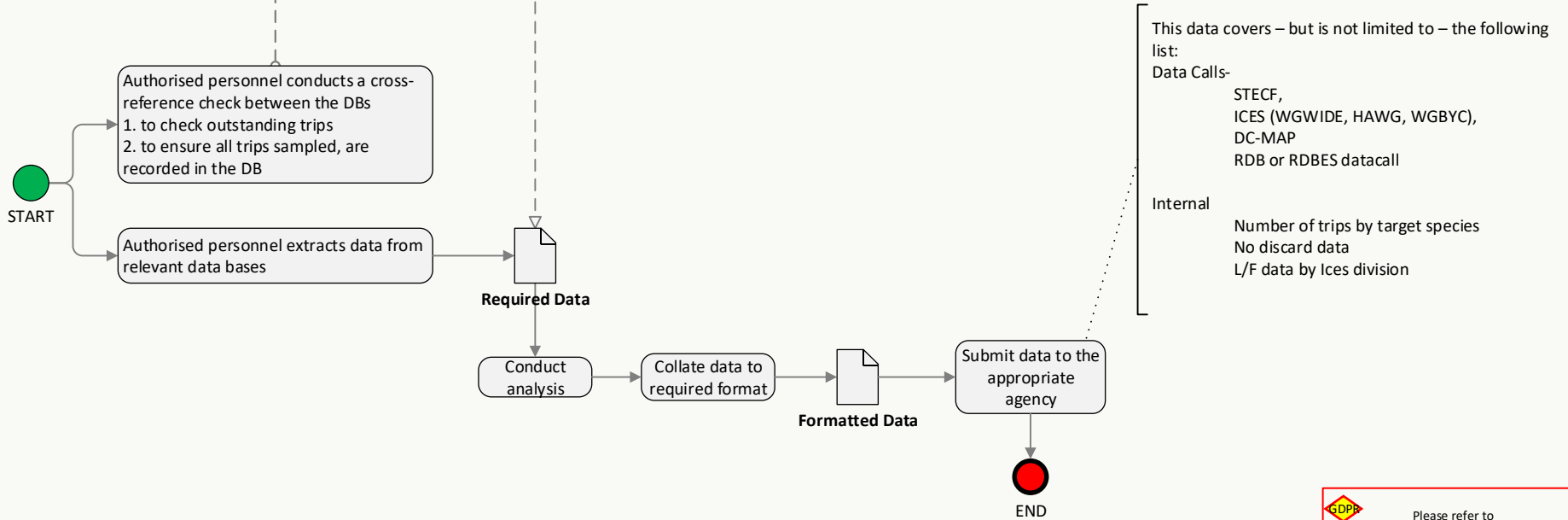


**GDPR** Please refer to 'FEAS\_GDPR\_1\_PersonalData\_V1.0' which is inserted as a page in this process flow for reference only. It illustrates how FEAS handles Personal Data under GDPR guidelines.

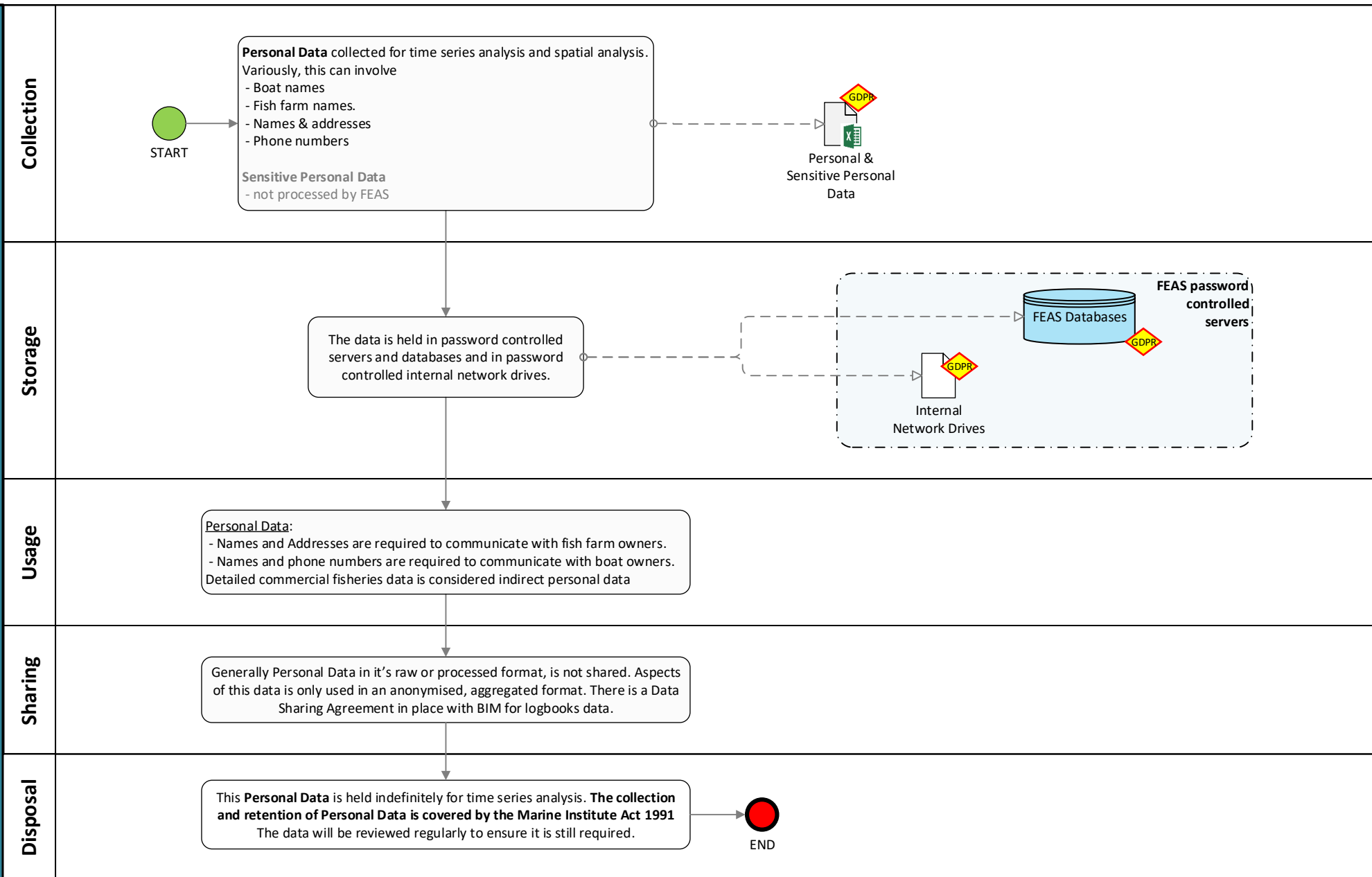
Data Storage in MI



Analysis in MI



**GDPR** Please refer to 'FEAS\_GDPR\_1\_PersonalData\_V1.0' which is inserted as a page in this process flow for reference only. It illustrates how FEAS handles Personal Data under GDPR guidelines.



**Personal Data**  
Data relating to *living, identifiable* individuals who can be identified, directly or indirectly, by reference to an identifier such as: name, address, location data, localisation, online identifier, cultural profile, income, health information

**Sensitive Personal Data**

- racial origin
- political opinions
- religious or philosophical beliefs
- trade union membership
- genetic data (e.g. biological samples)
- biometric data (e.g. fingerprints, facial recognition))
- data concerning health
- data concerning a person's sex life or sexual orientation

Explicit consent is required to process special categories of personal data