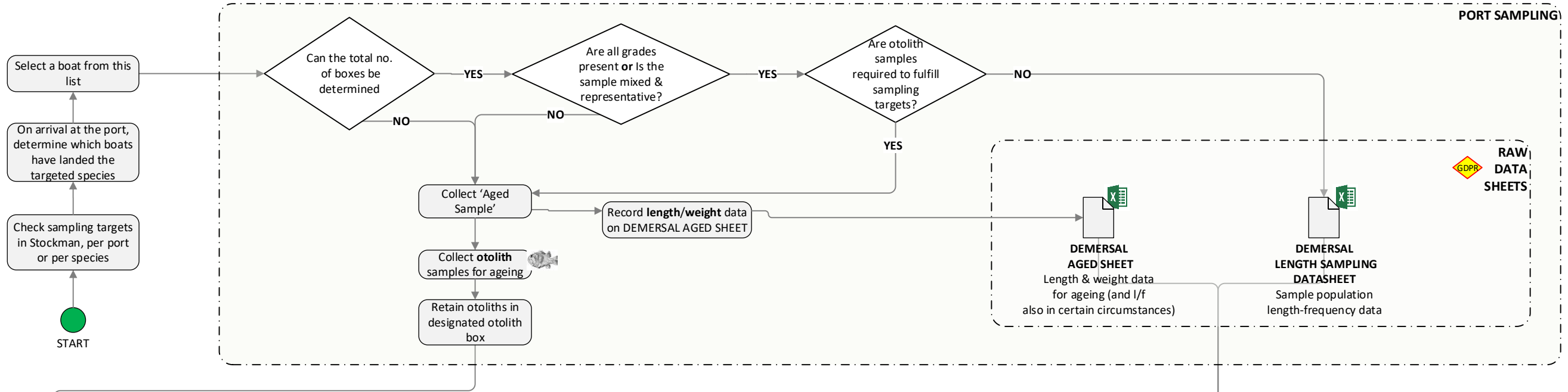
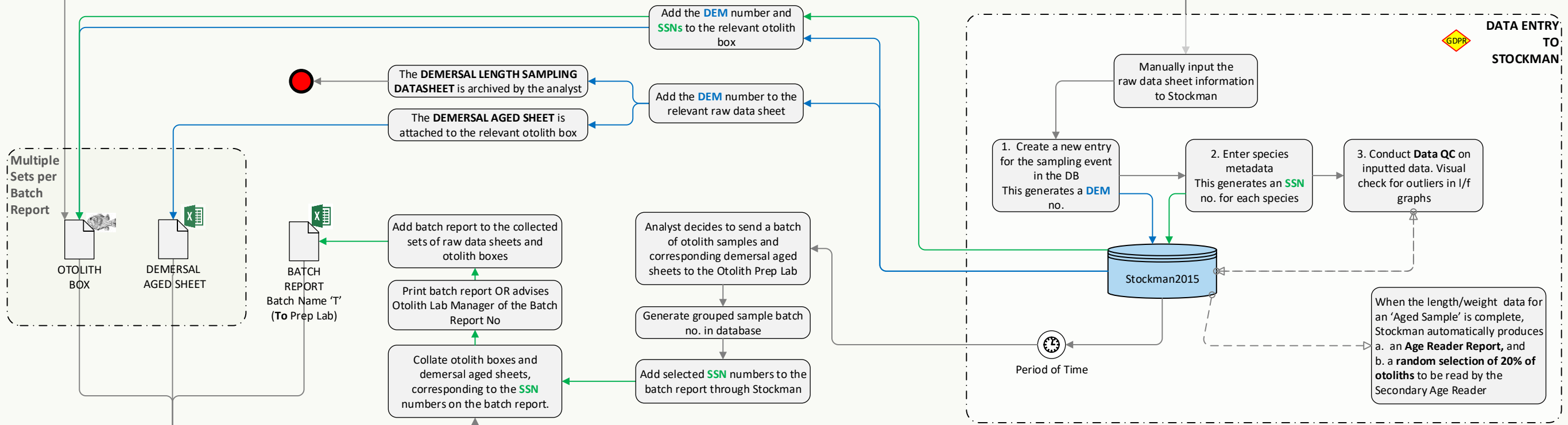


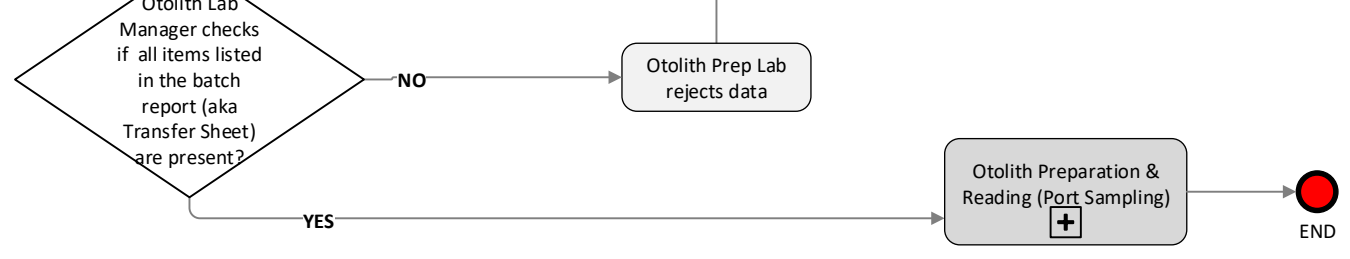
Data Collection in Ports



Data Storage in MI



Analysis in MI

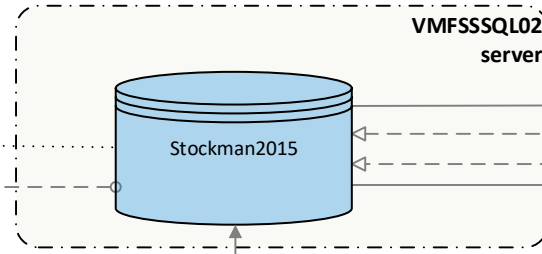


GDPR Please refer to 'FEAS_GDPR_1_PersonalData_V1.0' which is inserted as a page in this process flow for reference only. It illustrates how FEAS handles Personal Data under GDPR guidelines.

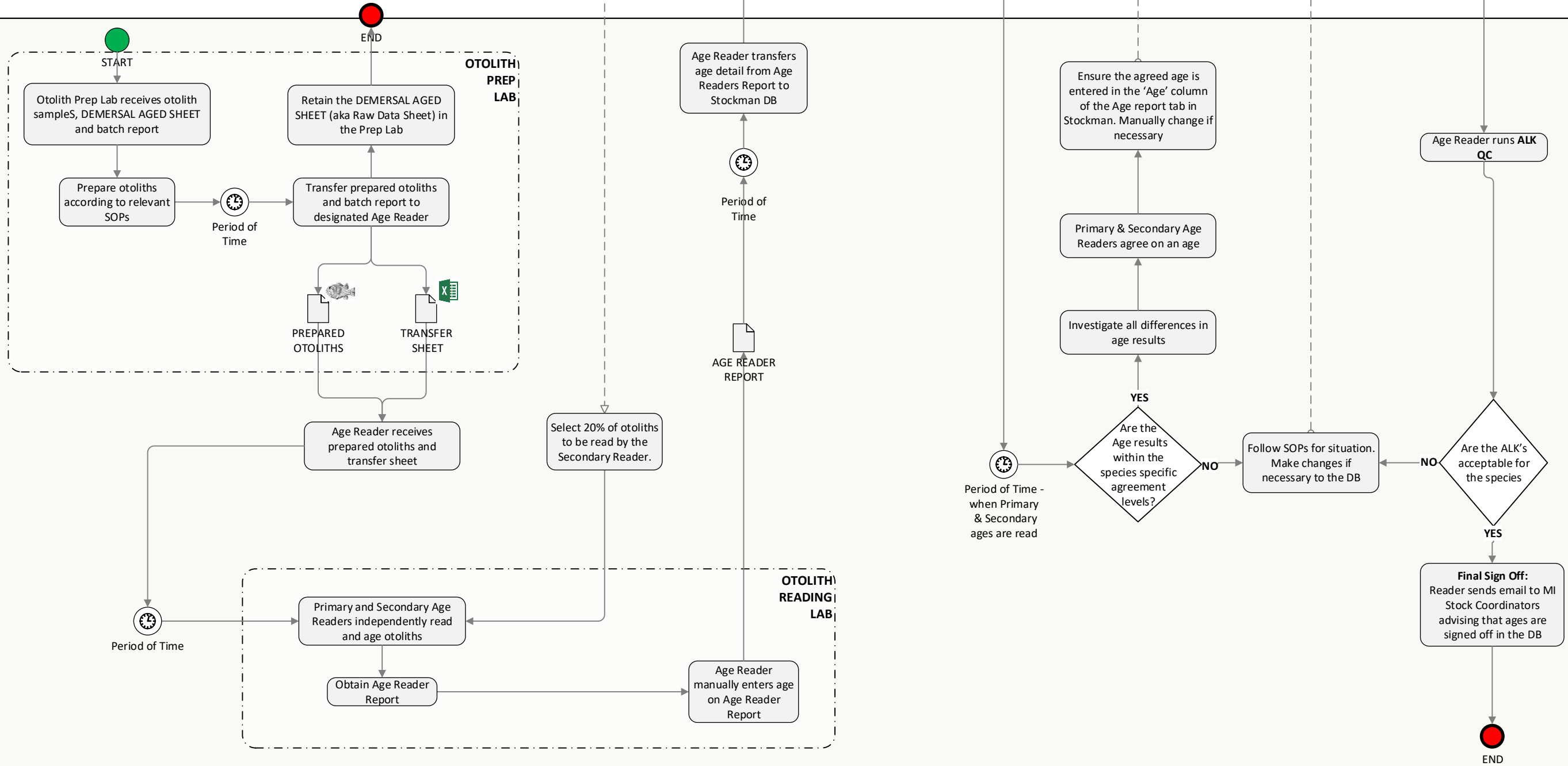
Data Storage in MI

When the analyst enters the length/weight data for an 'Aged Sample', Stockman automatically generates

1. an **Age Reader report**, ready to be printed by the Primary Age Reader at a future date
2. a **random selection of 20% of otoliths** to be read by the Secondary Age Reader. This is indicated on the Age Reader Report



Analysis in MI



Collection



Personal Data collected for time series analysis and spatial analysis. Various, this can involve

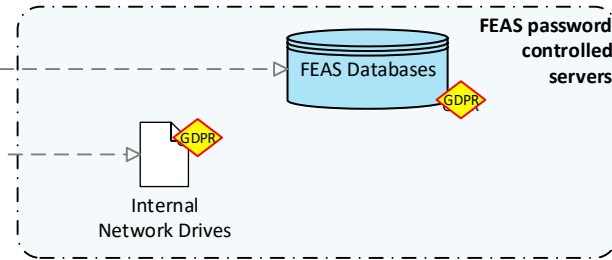
- Boat names
- Fish farm names.
- Names & addresses
- Phone numbers

Sensitive Personal Data
- not processed by FEAS



Storage

The data is held in password controlled servers and databases and in password controlled internal network drives.



Usage

Personal Data:

- Names and Addresses are required to communicate with fish farm owners.
- Names and phone numbers are required to communicate with boat owners.

Detailed commercial fisheries data is considered indirect personal data

Sharing

Generally Personal Data in it's raw or processed format, is not shared. Aspects of this data is only used in an anonymised, aggregated format. There is a Data Sharing Agreement in place with BIM for logbooks data.

Disposal

This **Personal Data** is held indefinitely for time series analysis. **The collection and retention of Personal Data is covered by the Marine Institute Act 1991**
The data will be reviewed regularly to ensure it is still required.



Personal Data

Data relating to *living, identifiable* individuals who can be identified, directly or indirectly, by reference to an identifier such as: name, address, location data, localisation, online identifier, cultural profile, income, health information

Sensitive Personal Data

- racial origin
 - political opinions
 - religious or philosophical beliefs
 - trade union membership
 - genetic data (e.g. biological samples)
 - biometric data (e.g. finger prints, facial recognition))
 - data concerning health
 - data concerning a person's sex life or sexual orientation
- Explicit consent is required to process special categories of personal data